

## Spot Water Sensor (WSxx)



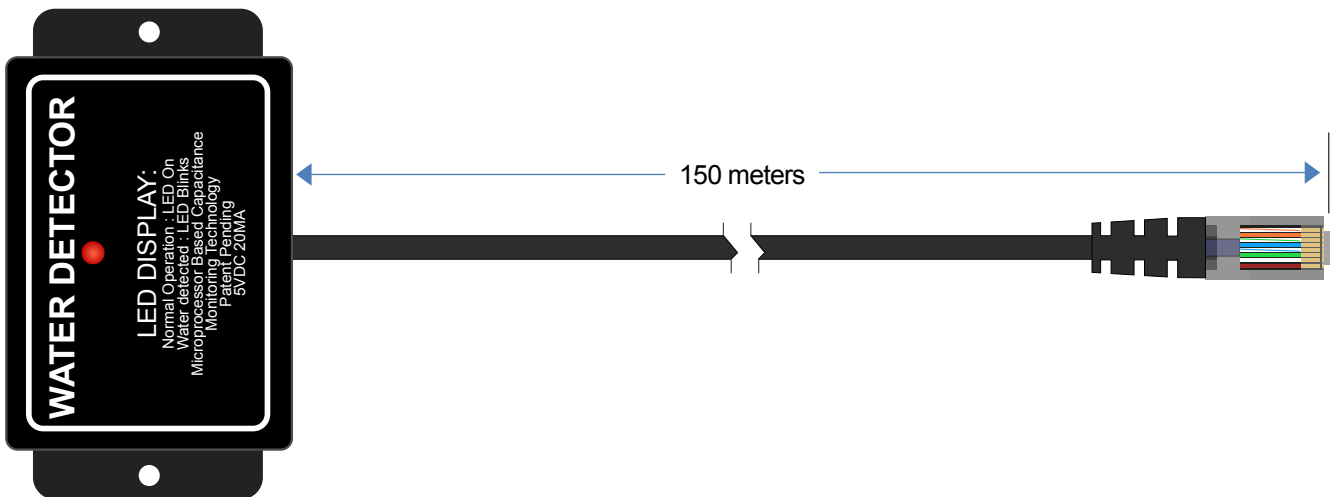
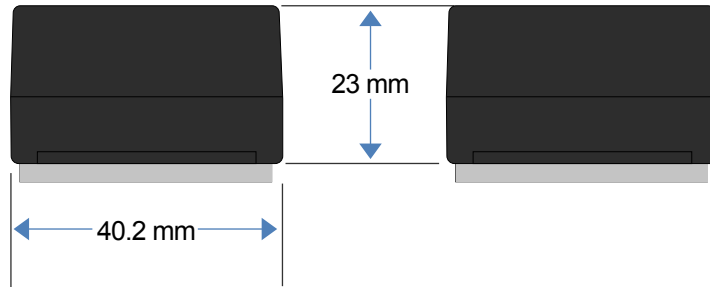
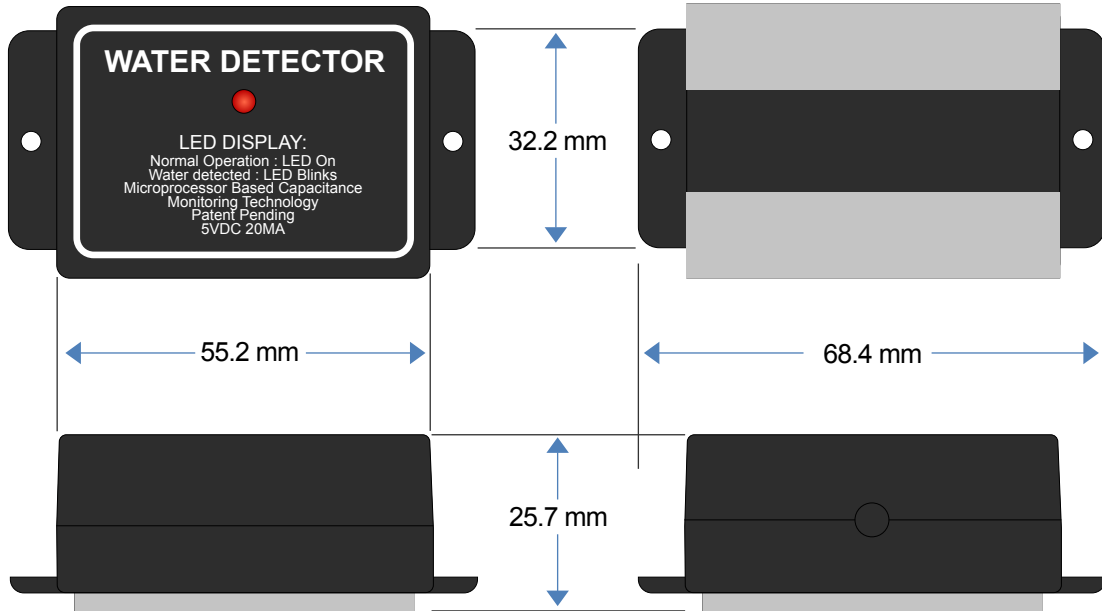
Water leaks can be a disaster, causing damage and potential large monetary losses. Protect your facility and infrastructure using spot water sensors. Placed at strategic positions under raised flooring in a data center, they can be used as an early warning indicator when water may pose a threat. The Spot Water Sensor uses technology developed by AKCP to detect the presence of even de-ionised water.

## Technical Specifications

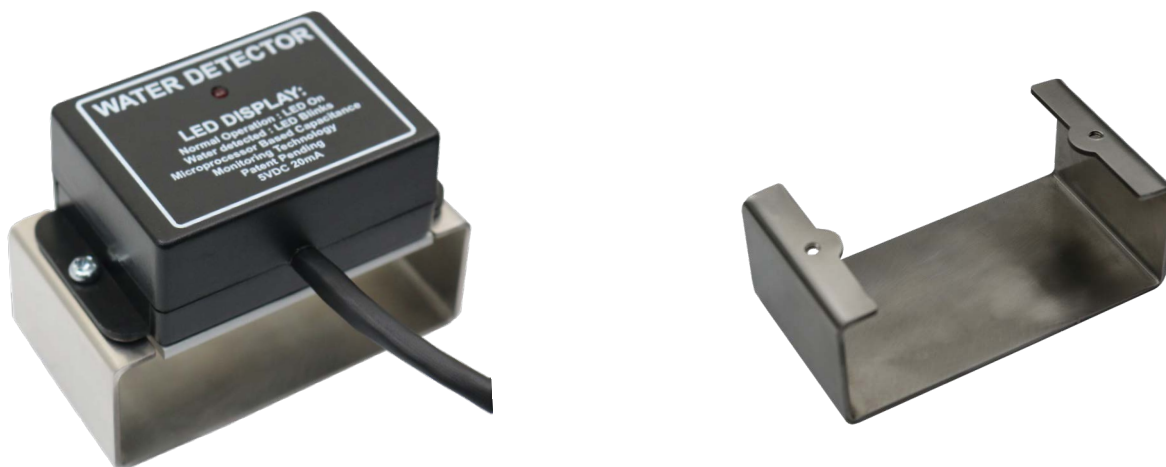
Measurement Range	Wet or Dry
Sensor Type	Open/Closed contact input switch
	Patent pending, microprocessor controlled, capacitance measurement technology
	Able to measure distilled water
Measurement Rate	Multiple readings every second
Indication	LED for Status
Operating Temperature	-20 °C~60 °C 4 °F~140 °F
Interface	
Communications Cable	RJ-45 jack to sensor using UTP Cat 5 wire
Communications Cable Max. length	The Spot Water Sensor can be extended from the RJ-45 Intelligent Sensor ports on the base units up to 500 feet, or 150 meters using standard CAT5/6 LAN cable
Power Source	Powered by the controller unit. No additional power needed
	Full autosense including disconnect alarm
Power Consumption	Typical 65 mWatt, 13mA
Dimensions	55(W) x 39(H) x 27(D) mm
Mounting	Screw mounting
Important Note	AKCP does not recommend the spotWater Sensor to be placed on a conductive surface. If this is required, add the Insulation Coating P/N : WSIC to each spotWater Sensor ordered
Sensor count	1



## WSxx - Technical Drawing



## Water Sensor Stand 12/24mm - (WSS-12/24)



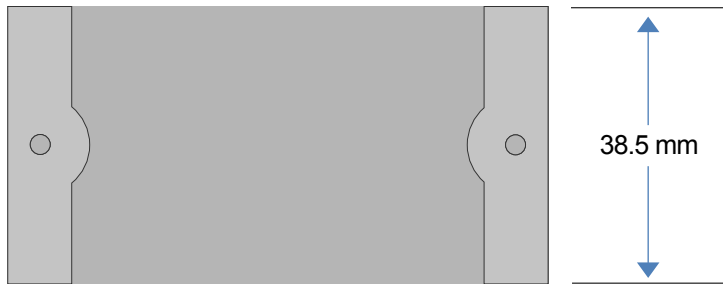
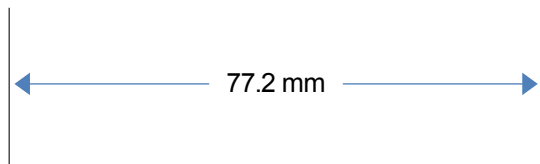
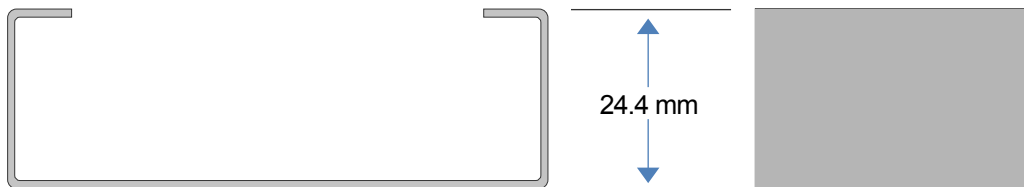
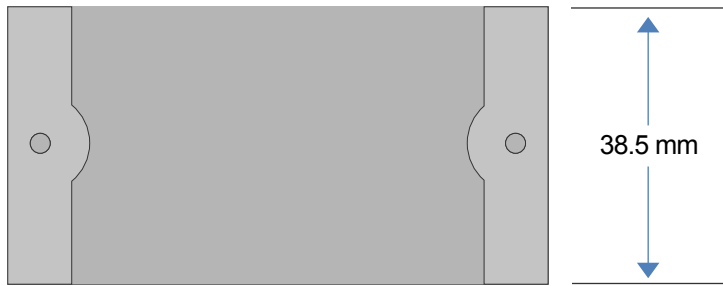
The water sensor stand allows you to position the spot water detector either 12mm or 24mm above floor level. This means you can place the sensor in areas that are expected to be wet, such as a drip tray, but only alert when the water level reaches 12mm or 24mm in height.

This accessory is made in stainless steel and can be installed in permanently damp environments without rusting.

Comes with all mounting hardware needed to place the AKCP Spot Water detector onto the stand.

# WSS12/24- Technical Drawing

WSS-124



WSS-12

